



ROBOTS
TECHNICAL SHEET

Technical rider

Updated May 11, 2010

Production

Compagnie les Voyages Extraordinaires
Théâtre Barnabé

Who's who

Direction & Composition :	Christian Denisart
Light & Set design:	Gilbert Maire
Choreography :	Corinne Rochet & Nicholas Pettit
Composition & arrangement :	Lee Maddeford
Costumes :	Cécile Collet

Woman:	Laurence Iseli
Man :	Branch Worsham

Contacts

Production :	Les Voyages Extraordinaires Christian Denisart Av. de Cour 9 1007 Lausanne Switzerland +41 21 601 49 79 +41 76 386 14 72 christian.denisart@bluewin.ch
--------------	---

Booking :	Black Lamb Productions Marc Lambelet Rue Enning 2 1003 Lausanne Switzerland +41 79 638 10 49 +41 21 351 40 55 info@blacklamb.ch
-----------	--

Please note that everything listed here is absolutely needed to ensure proper conditions for the performance. This sheet may be changed according to the technical specificities of the theaters but please contact us prior for approval.

TECHNICAL NOTES

show

Duration : 75 minutes without intermission

Service required for set up

(note : 1 service = 4 hours)

1 service prior to arrival to rig the lights

7 services for unloading the truck (with easy access) and to set scenery and lights

1 service for a technical rehearsal

Requested staff

Load in and load out :

- 1 stage manager
- 6 stage-hands (minimum)

Set up:

- 2 lights specialists + Rehearsal (minimum)
- 4 stage hands and 1 rigger (minimum)

Rehearsal and performance :

- 1 stage hand
- 1 operator

See set-up schedule

Staff on tour

9 people :

- 1 tour manager
- 1 director
- 2 actors
- 1 robots engineer
- 1 stage-manager
- 1 light man
- 1 sound man
- 1 props and special effects

TRANSPORTATION

The personnel travels in two vehicles able to transport 6 people + luggage each

The set travels in a 40' feet container. A parking space close from stage access must be available during the whole stay. Weight : ~5000 kg

The Robots and the mechanical orchestra are traveling separately from the set.

Total cubage : 11.27 m³.

Total weight : ~1387 kg:

Details :

Flightcase for Leila

Dimensions ext: 1860 x 1395 x 860mm (L x H x P) : 2.23 m³

Weight : ~185 kg

Flightcase for Igor

Dimensions ext: 1710 x 1145 x 960mm (L x H x P) : 1.88 m³

Weight : ~150 kg

Flightcase for Bruno

Dimensions ext: 875 x 1295 x 660mm (L x H x P) : 0.75 m³

Weight : ~100 kg

Flightcase for batteries and accessories

Dimensions ext: 1015 x 700 x 529mm (L x H x P) : 0.37 m³

Weight : ~250 kg

Piano

Dimensions ext : 1520 x 1210 x 610mm (L x H x P) : 1.12 m³

Weight : ~252 kg

Organ

Dimensions ext: 1600 x 1600 x 700mm (L x H x P) : 1.79 m³

Weight : ~200 kg

Drum

Dimensions ext: 1600 x 1500 x 850 mm (L x H x P) : 2.4 m³

Weight : ~100 kg

Flightcase for accessories

Dimensions ext: 1500 x 600 x 800 mm (L x H x P) : 0.72 m³

Weight : ~150 kg

SET

Description

A room closed on 3 side on 2 floors, with a ceiling and a lift.
The ceiling (750kg) shall and the lift (150kg) must be rigged.

Required stage dimension (minimum)

Min. 9m width by 8m depth behind the front curtain
Wall to wall 13m by 9m
Opening min 9m
Clearance 7m

Stage

Stage should be empty at our arrival.

Requested equipment

16 x 2m long cables to lift the ceiling
Compressed air for bolter

See attached

Plan and side view
Lighting plan
Instrument schedule

SPECIAL EFFECTS

Requested

1 small smoke machine on the 1st floor
1 hazer type MDG CO²

Provided

2 small pyro. effect (simulating a short circuit)
1 candle on stage

LIGHTS

Requested equipment

Dimmer board

1 Grand Ma Light or Ultra Light

Instruments

See instrument schedule

Gel

Rosco 119
Lee 120 141 117

Blue lights

Blue lights for backstage dimmable by the board

SOUND

General note

The sound desk must be in the room or at least in a wide open space on the room.

Diffusion

P.A. adapted to the theatre, with subs

Stereo diffusion up stage on the 1st floor, behind the instruments

Mixing console

01V96 mixer or a LS9-16

CD player with autopause

Stagebox on the 1st floor, stage right

Stage

Mikes:

- Kit Drum: (1x B52, 1x Sm57, 4x Ksm137 Hihat, Over Head, small percussions)

- Organ: 4 x KM184 Neumann

- Piano 2 x KM184 Neumann

- 2 x DI passiv

6 tall microphone stands

6 small microphone stands.

All necessary cables

INTERCOM

1 stage manager

1 lighting desk

1 sound desk

1 robot engineer upstage

1 upstage 1st floor

1 HF OR 1 Stage left and 1 Stage Right

ROBOTS

Requested

Power

220V 10 Amps for batteries charge and computers

Robots booth

1 camera at the sound desk, 1 monitor at the robots booth, and a cable to connect the two devices.

Provided

1 video system between the ceiling and the robot booth

1 video system between the lift and the robot booth

WARNING : WIFI

Communication with the robots using WiFi (802.11), WiFi networks already installed on the site must be reported to the Robots engineer and always be switched off during the performances

ACCOMODATION AND CATERING

Requested:

Accommodation in first class hotels

One people arriving on the eve of set up day
2 people arriving in the morning of set up day
Six people arriving in the morning of the eve of the First show

Meals

Breakfast at hotel
Two hot meals per day for the entire crew

Dressing-room :

Two well-lit dressing-rooms with chairs, tables, mirrors

Ironing board

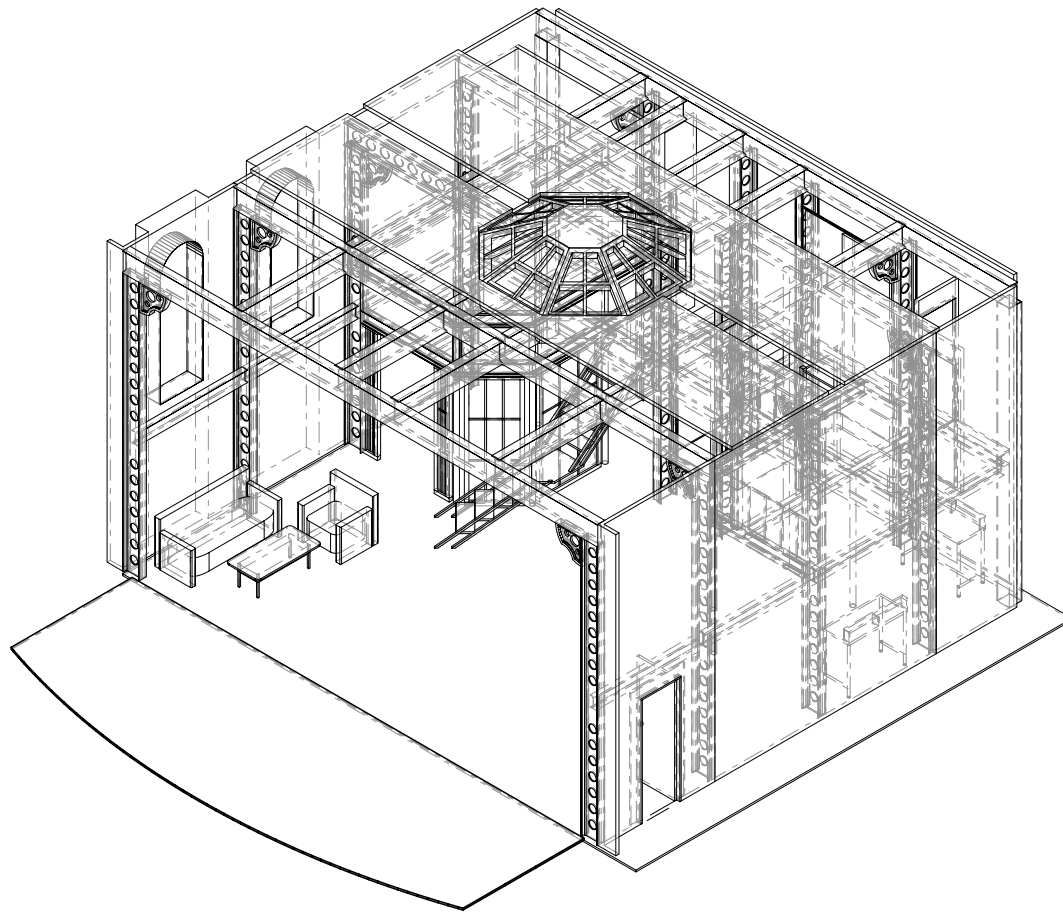
SET UP PLANNING FOR SCENERY AND LIGHT

1 service = 4 hours

SERVICES	SET UP	CREW
1	1 service prior to arrival to rig the lights (cf. plan)	1 stage manager 2 stage hands (1 rigger)
1 ^{er} 9h-13h	Unloading Floor Assembly of the ceiling on floor Black box	1 stage manager 4 stage hands (1 rigger)
2 ^{ème} 14h- 18h	Lifting of the ceiling Assembly of the vertical structure Assembly of the 1st floor structure Set up of the front light	1 stage manager 4 stage hands (1 rigger) 2 lights specialists
3 ^{ème} 19h- 23h	Finishing of the 1st floor The ceiling is placed on the structure Assembly of the orchestra place Assembly of the stairs	1 stage manager 4 stage hands (1 rigger)
4 ^{ème} 9h-13h	Assembly of the lift system and setting Lighting in the scenery Floor, kitchen and assembly workshop finishing Robots unpacking and setting	1 stage manager 4 stage hands (1 rigger) 2 lights specialists
5 ^{ème} 14h-18h	Walls, furniture, sidelines assembly Video system for robots operator robots booth setting Cables and patch finishing Special effects setting	1 stage manager 4 stage hands (1 rigger) 2 lights specialists
6 ^{ème} 19h-23h	Scenery finishing Focus Autot light programming	1 stage manager 1 operator 1 lights specialists
7 ^{ème} 9h-13h	light effect rectification Scenery finishing Robots testing Sound check Rehearsal preparation	1 stage manager 1 operator
8 ^{ème} 14h-18h	Rehearsal Corrections	1 stage manager 1 operator
9 ^{ème}	1st performance	

PLANNING DE DEMONTAGE

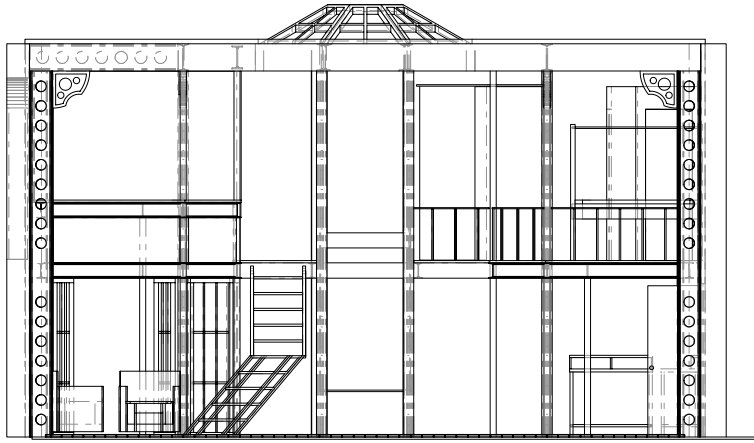
SERVICES	MONTAGE	PERSONNELS
1 ^{er} Basically just after the last performance	disassembly and storage of robots, music instruments, accessories, cables and light in the scenery	1 stage manager 6 stage hands
2 ^e 9h-13h or overnight service as needed	Dismantling and loading of the scenery	1 stage manager 6 stage hands (1 rigger)



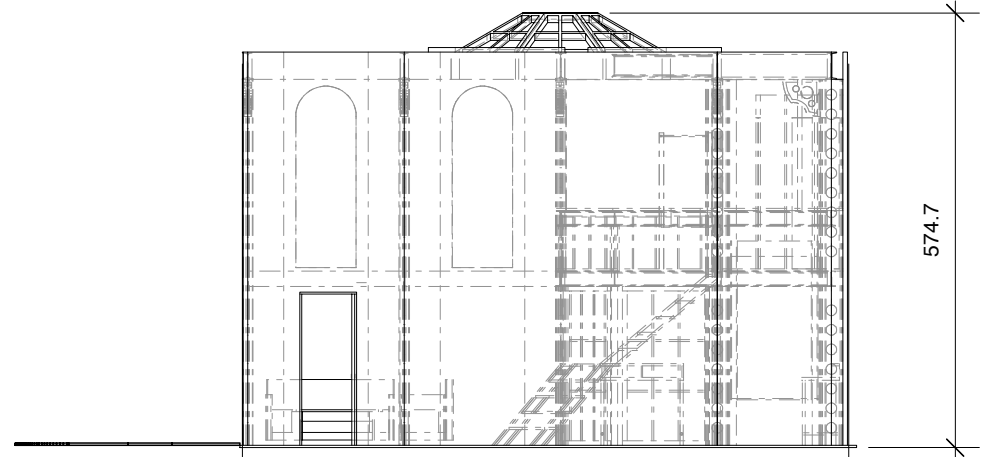
① vue de droite
Scale: 1:100

Date: **27.5.09**

scénographie Gilbert Maire
00 41 79 678 33 59

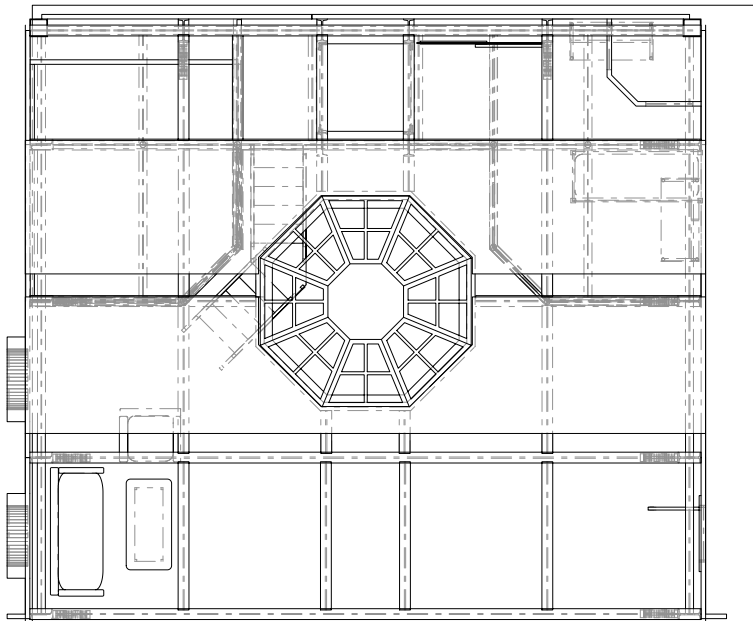


2 vue de face
Scale: 1:100



1 vue de droite
Scale: 1:100

801.8



899.7

3 vue en plan
Scale: 1:100

Date: **27.5.09**

scénographie Gilbert Maire
00 41 79 678 33 59

Instrument Schedule

Position	Channel	Inst Type	Purpose	Color
atelier	45	PAR 16 70W12V		230
	46	PAR 16 70W12V		230
	59	luminaire	mise sous tension	
	45	PAR 16 70W12V		230
	45	PAR 16 70W12V		230
	45	PAR 16 70W12V		230
chambre	57	PAR 16 70W12V		201
	56	PAR 16 70W12V		176
	57	PAR 16 70W12V		201
	57	PAR 16 70W12V		201
	57	PAR 16 70W12V		176
coupole	F4	PAR 64	haut escalier	CC
	F8	PAR 64	face centre	CC
	F1	PAR 64	devant porte	CC
	F5	PAR 64	chambre lat	CC
	F7	PAR 64	porte	CC
	96/97/98/99	TRYCHROME		RVBJ
	F6	PAR 64	chambre face	CC
	F2	PAR 64	bas escalier	CC
	F3	PAR 64	salon	CC
cuisine	48	Source 4 Zoom 25j-50j	fond atelier	241
	47	Source 4 Zoom 25j-50j	cabine douche	241
	54	par 36		241
	52	par 36		230
	53	par 36	douche cuisine	230
décor	58	lustre 6*80W spot	lustre	
	55	Par 36	armoire	230
	50	80W spot	luminaire salon	
derrière fenêtre	F11	PAR 64		CC
	F12	PAR 64		CC
	F10	PAR 64		CC
	F9	PAR 64		CC
derrière porte	44	PAR 64	ext porte	202
lat cour decor	39	par 36		230
	40	par 36		230
	37	par 36		230
	38	par 36		230

Position	Channel	Inst Type	Purpose	Color
lat jardin decor	35	par 36	lit	241
	36	par 36	douche	241
	34	par 36		230
	33	par 36		230
pont	104/105/106/	TRYCHROME		RVBJ
	23	Source 4 Zoom 25j-50j	face atelier	230
	25	Source 4 Zoom 25j-50j	salon	719
	100/101/102/	TRYCHROME		RVBJ
		Mac 500		
		Mac 500		
	24	Source 4 Zoom 25j-50j	escalier bas	176
		Mac 500		
	21	PC 1000	porte	230
	17	PC 1000	escalier bas	230
	15	PC 1000	salon	230
	19	PC 1000	milieu cour	230
	18	PC 1000	face centre	230
	22	Source 4 Zoom 25j-50j	porte	176
	16	PC 1000	paroi jardin	176
	20	PC 1000	paroi cour	176
porteuse contre	32	Source 4 Zoom 25j-50j	latéral couloir 1er	N/C
	30	pc 1000	contre chambre	719
	108/109/110/	TRYCHROME		RVBJ
	112/113/114/	TRYCHROME		RVBJ
	31	pc 1000	douche	119
	28	pc 1000	contre ascenseur	719
	27	pc 1000	contre escalier	719
	26	pc 1000	tuyaux orges	135
	29	pc 1000	contre	719
salle	3	Source 4 Zoom 15j-30j	escalier	162/247
	2	Source 4 Zoom 15j-30j	centre jardin	162/247
	1	Source 4 Zoom 15j-30j	face salon	162/247
	4	Source 4 Zoom 15j-30j	centre lointain	162/247
	51	Source 4 Zoom 15j-30j	face chambre	176
	6	Source 4 Zoom 15j-30j	devant porte	162/247
	5	Source 4 Zoom 15j-30j	centre cour	162/247
	14	pc 1000	centre cour	176/
	9	pc 1000	salon	241/
	8	pc 1000	porte	241/
	7	pc 1000	centre jardin	241/
	10	pc 1000	ascenseur	241/
	13	pc 1000	salon	176/
	12	pc 1000	porte	176/
	11	pc 1000	ascenseur	176/